



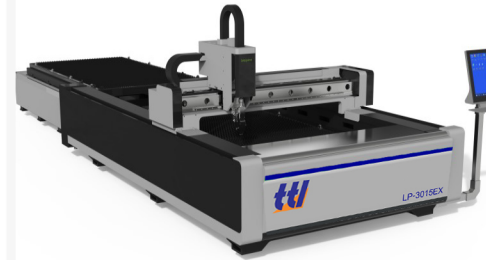
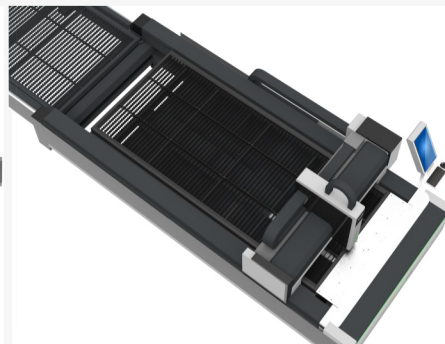
Mode & Working Area >

LP-3015EX  
3000x1500mm

LP-4020EX  
4000x2000mm

LP-6015EX  
6000x2000mm

LP-6025EX  
6000x2500mm





Product  
 Overview

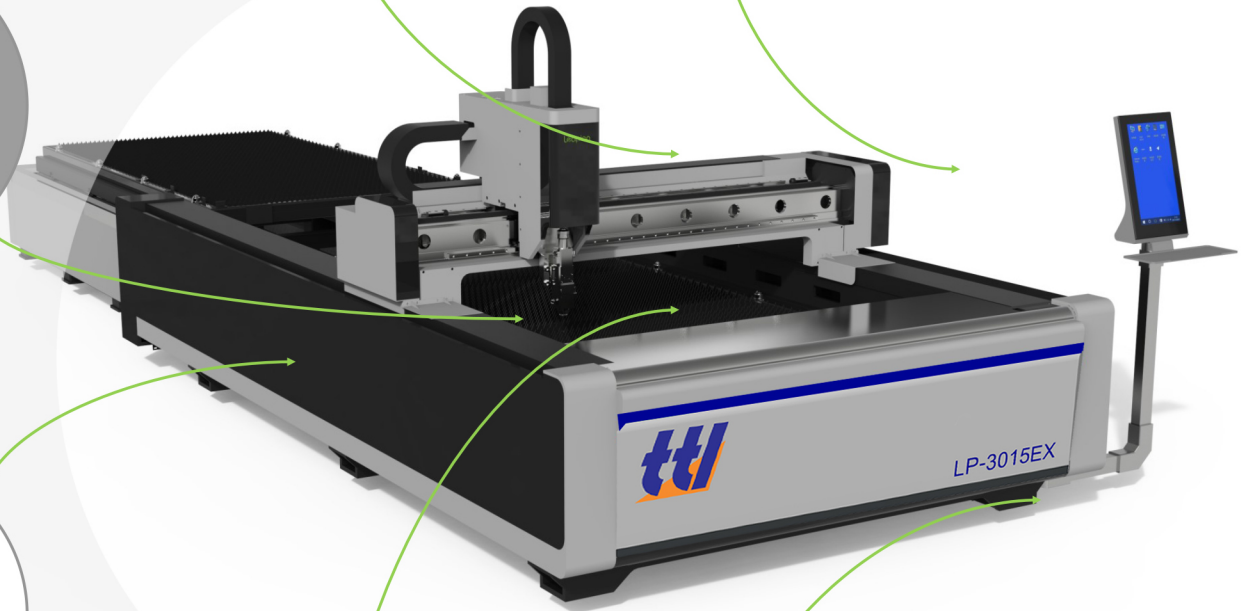
Max  
 Fiber Laser  
 Generator



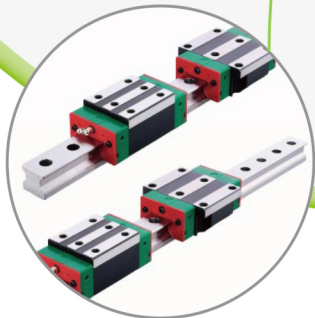
Japan Shimpo  
 Reducer



Japan Fuji  
 Motors



Taiwan YYC Rack



Taiwan HIWIN  
 Linear Guide Rails

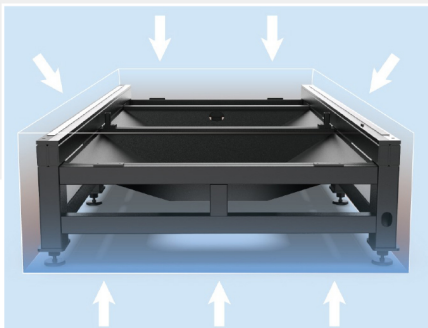
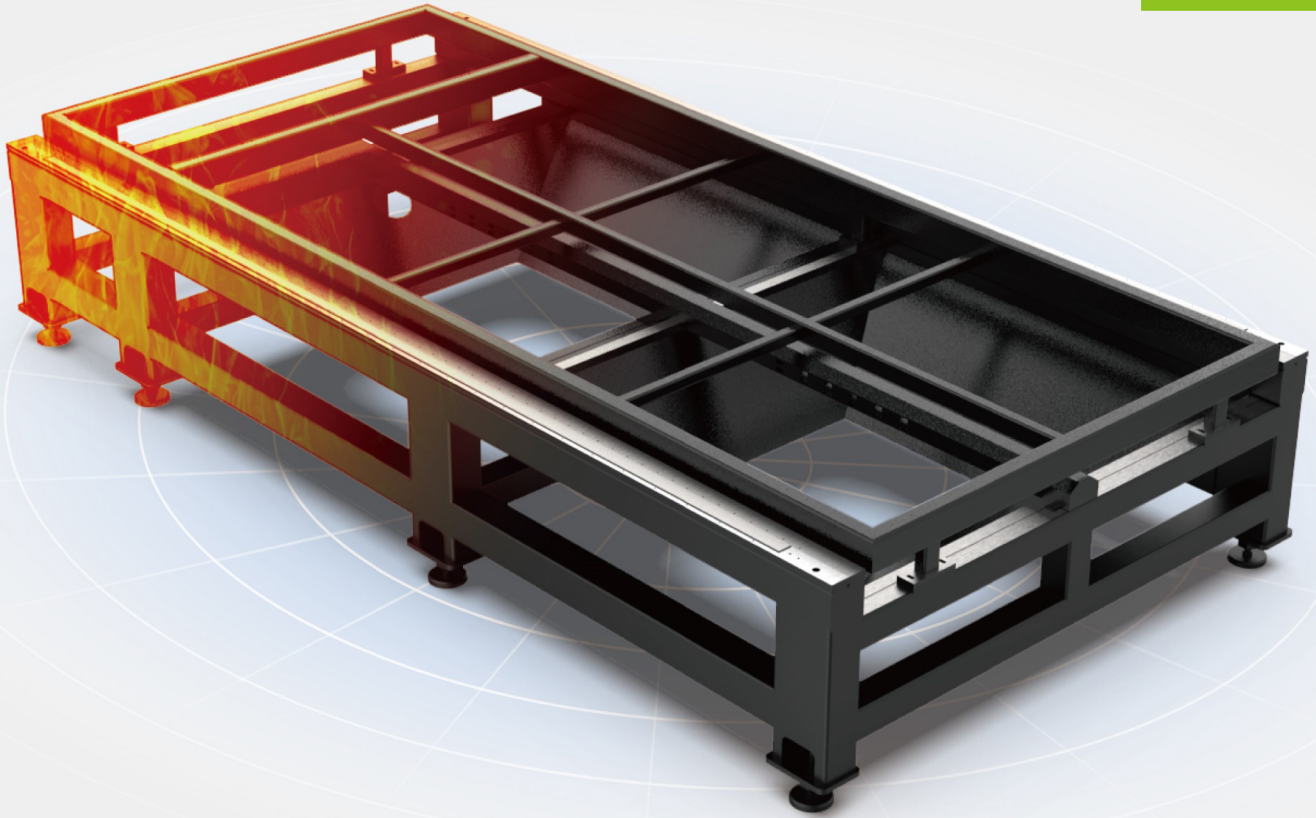


France Schneider  
 electrical components



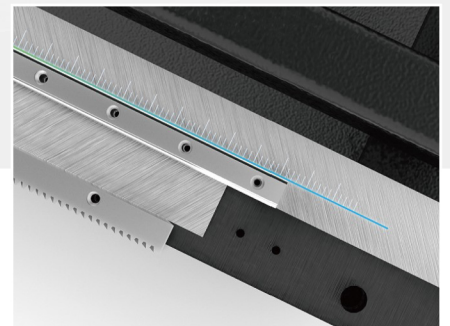
## Industrial Machine Bed

Product  
Overview



### Lifetime Service

It ensures the accuracy of the machine working for a long time, and it will not deform during its lifetime use.

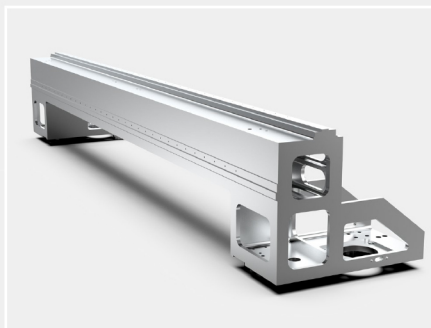


### Higher Precision

High strength, stability, tensile strength, ensuring 20 years of use without distortion;

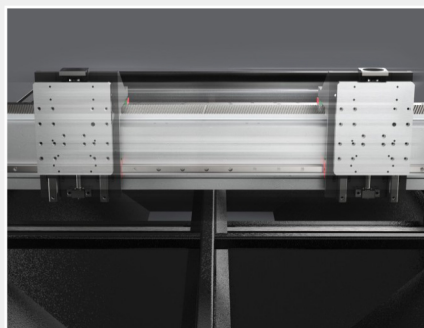
## Cast Aluminum Beam

Product  
Overview



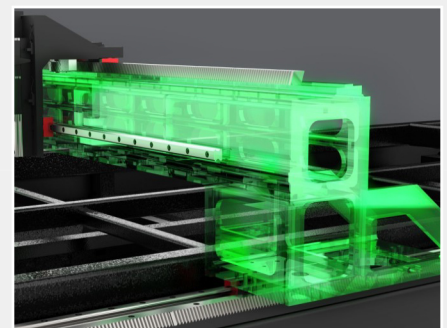
### Integral Steel Mold & Die-casting Technology

Monolithic cast aluminum beam, light weight, high strength, no deformation. Molded and framed by integral steel mold and die-casting technology, light cross-beam make equipment a high operation speed, improving processing efficiency and



### High Speed

The light crossbeam can ensure the machine have high moving speed and improve the processing efficiency.



### More Efficient

The aluminum profile beam of the aerospace industry makes the equipment have efficient dynamic performance, greatly improving processing efficiency while ensuring processing quality.

## Laser Cutting Head

### Product Overview

#### Multiple Protection

3 pieces of protection lens, highly effective protection of collimating focus lens. 2-way optical water cooling, effectively extending the continuous working time.

#### High-precision

The closed-loop stepping motor is adopted to effectively avoid step loss. The focusing speed is 100 m m / s and the repetition accuracy is 1 μ m. IP65 class dust-proof, patent protection mirror cover plate, dust-proof without dead angle.

#### Various Brands Of Laser Head Are Available

We can provide all high quality laser heads. All have been tested by us for a long time. Raytools/WSX/Porad all of them are our long-term partners.

## Control System

### Cypcut control system

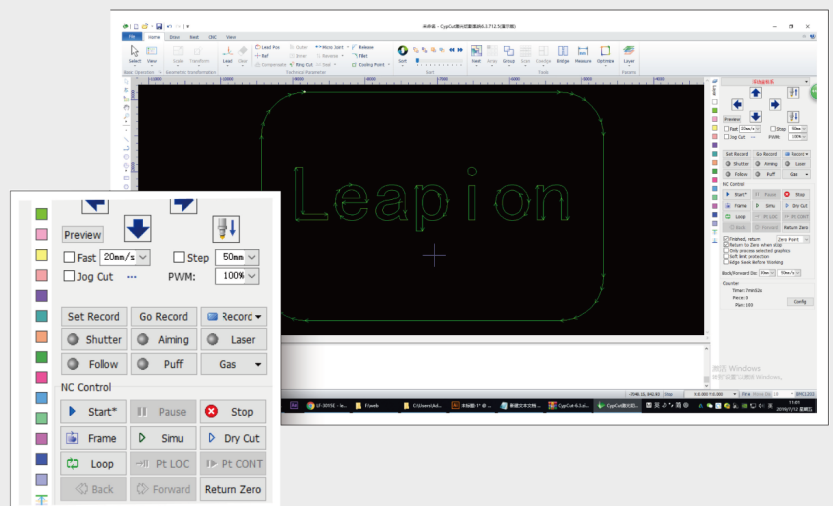
The most professional control system for the fiber laser cutting machine Fully functional, with all function that use on plate.

### Cutting technique

Support offset tube center error in production to improve through holes cutting precision; Support steel channels cutting; Support separation technique for corner cutting. Support auto loading/unloading process, cycle production and automatic tube feeding. Support all functions of FSCUT2000

### Control performance

Open-loop control system, Friendless 5th generation motion control algorithms. Trajectory accuracy 0.02mm, positioning accuracy 0.001mm, repeatability 0.003mm. Access encoder feedback in real time, to compare com-





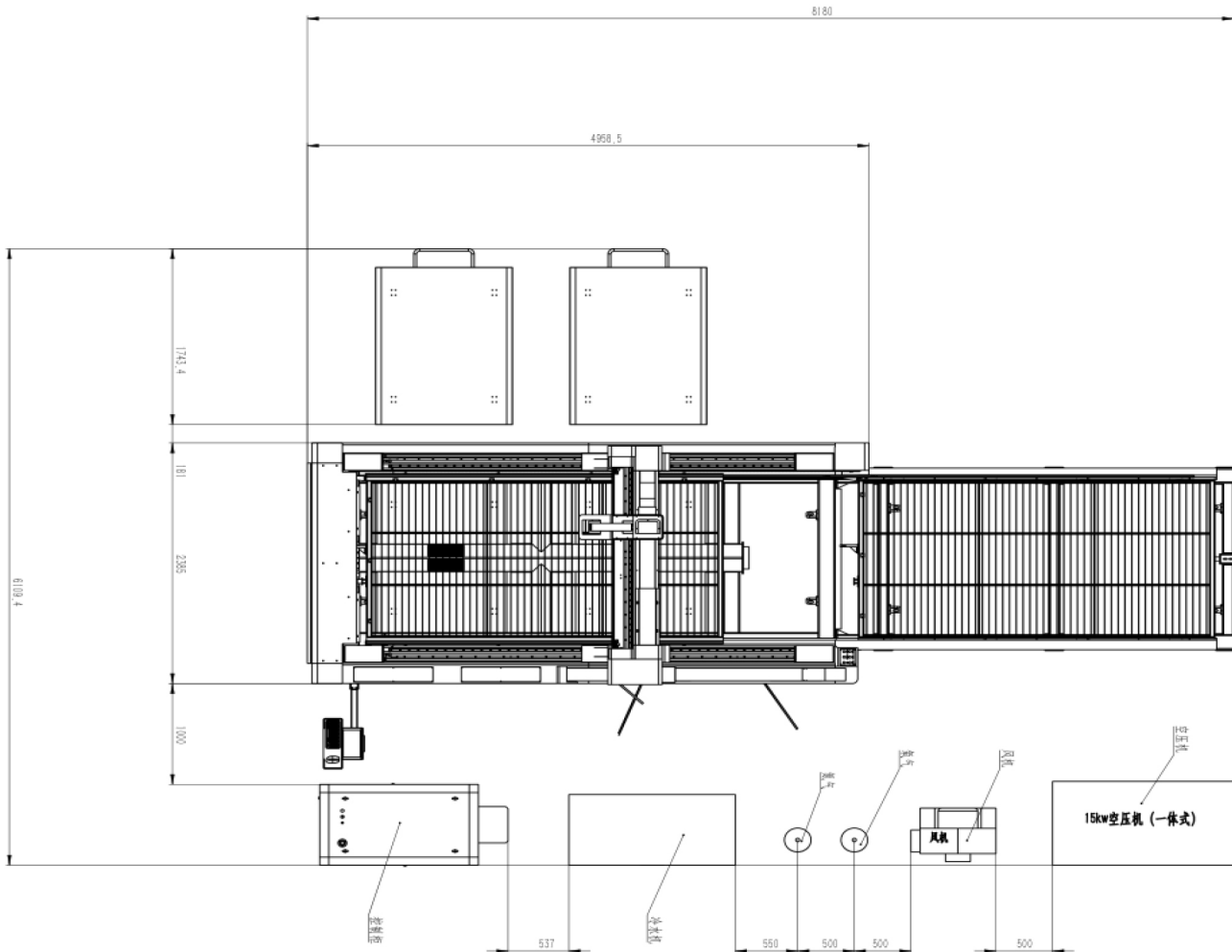
# Specification

Technical Parameters

## Specification

Model No.	LP-3015EX	LP-4020EX	LP-6015EX	LP-6025EX
Working Area	3000*1500mm.	4000*2000mm.	6000*1500mm.	6000*2500mm.
Laser output power	1000w/1500w/2000w/3000w/4000w/6000w			
Repeated repositioning accuracy	±0.05mm			
Positioning accuracy	±0.03mm			
Maximum speed	100m/min			
Maximum acceleration	1G			

## Machine Occupation Map



## Cutting parameter

Processing Capacity

