

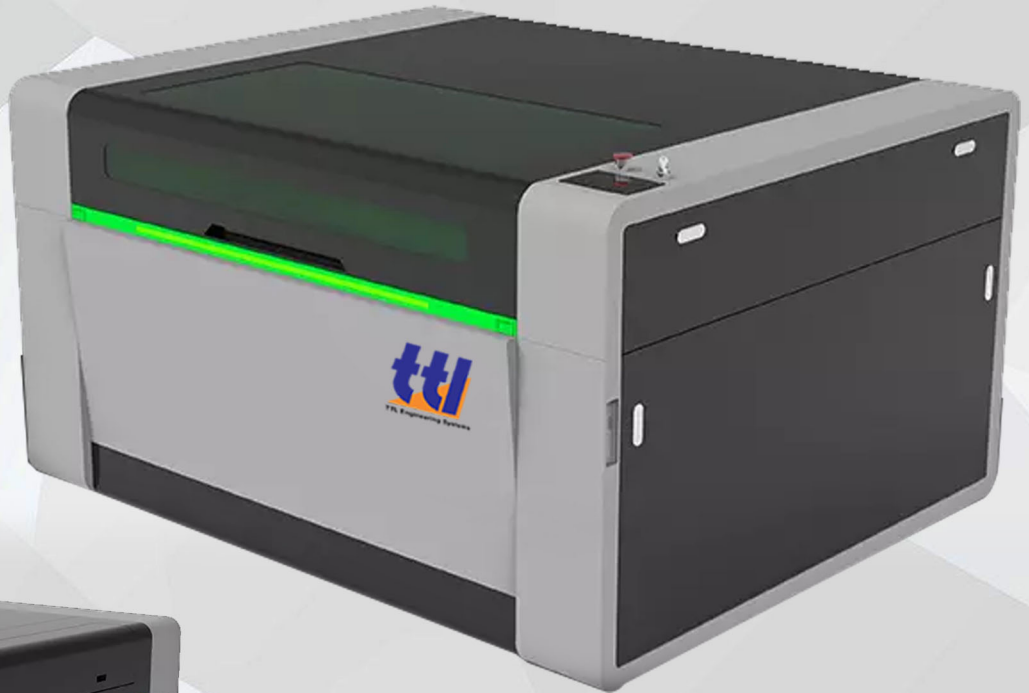


บริษัท ที.ที.แอล. เอ็นจิเนียริง ซิสเต็มส์ จำกัด  
TTL Engineering Systems Co.,Ltd.



# Laser Cutting & Engraving Machine

More stable , more efficient



## More space saving

Vacuum cleaner, water chiller, etc. can be placed in the rear of the machine, taking up less space.

- ✓ More humanized design
- ✓ Multiple brands available
- ✓ High precision



Co2 LC laser cutting & engraving machine

Imagine | Design | Create

## Description

The fully enclosed design can avoid environmental pollution and protect the health of the operator. The machine is of moderate height and can be opened from front to back, left and right, which confirm to the ergonomic design and is more convenient for operation

## RECI / YONGLI / EFR Multiple brands available

Strictly select laser tube supplier to ensure stable output and long service life of laser tube



## Specification

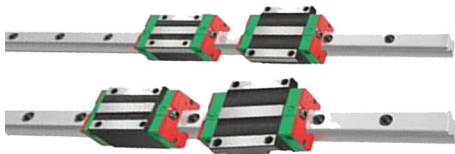
Model No.	LC-1060	LC-1390	LC-1610
Work size	1000*600mm	1300*900mm	1600*1000mm
Laser output power	80W/100W/130W/150W		
Locating Accuracy	≤+0.01mm		
Engraving Speed	0-20000mm/min		
Min. Engraving Size English Letter	1.0mm*1.0mm		
Cooling Type	Water Cooling		
Control System	RDCAM / DSP Control System		
Highest Scanning Precision	2500DPI		

## Materials can be processed

Plate fiber cutting machine for cutting and engraves suitable for cutting carbon steel, Leather, Wood stainless steel, aluminum, brass and alloy metal materials

## HIWIN guide rails

Adopted Taiwan Hiwin linear guide rail, high positioning accuracy, scroll guide, reduce wear to maintain accuracy for a longer time.



## How does the laser machine process ?



MATERIALS



CUT



ENGRAVE



MARK

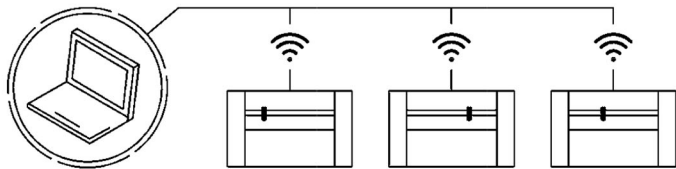


WELD

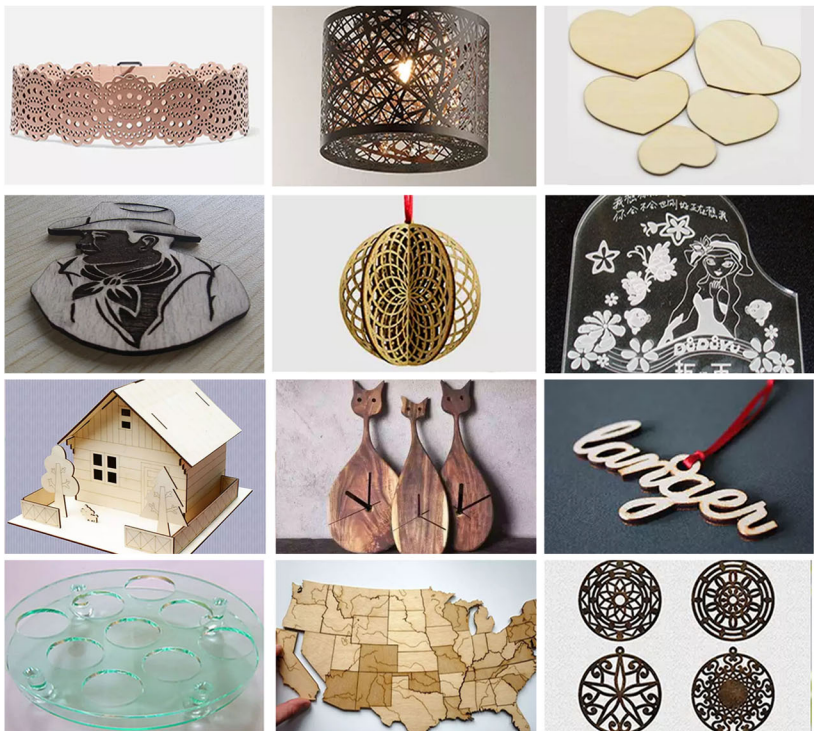
	CUT	ENGRAVE	MARK	WELD
Acrylic	✓	✓		
Glass		✓		
Laminates	✓	✓		
Leather	✓	✓		
Paper	✓			
Plastics	✓	✓		
Stone		✓		
Textiles	✓	✓		
Wood	✓	✓		
Stainless steel	✓			
Galvanized sheet	✓			

## WIFI control

Convenient- Engineers can remotely control computers and machines, adjust parameters and solve problems. Efficiency- One PC can control several machines.



## Examples of applications



## Longer life

LC series CO2 laser machine is driven by high-quality synchronous belt, the tooth surface is made of nylon with high wear resistance, and glass fiber inside ensures good resistance to twists and low elongation

